

## WARFIGHTER HEMP-600MG FS NATURAL LOT-2116-2

Potency Analysis Report

METRC No. 1A400071267FAAC000002433

Sample: **88162H-C** CONCENTRATES

Batch:

Item Notes:

### CANNABINOID LEVELS

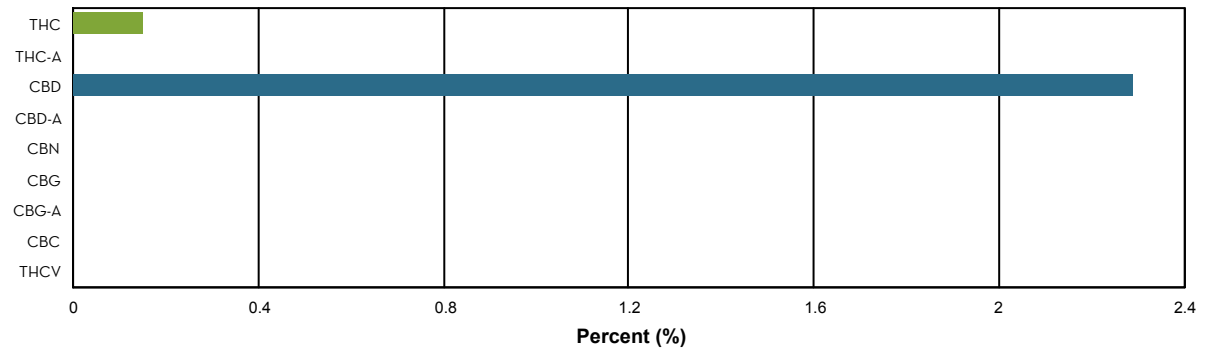
	%	mg/gram
THC	0.15	1.47
THC-A	N/D	N/D
CBD	2.29	22.93
CBD-A	N/D	N/D
CBN	N/D	N/D
CBG	N/D	N/D
CBG-A	N/D	N/D
CBC	N/D	N/D
THCV	N/D	N/D
<b>Total</b>	<b>2.44</b>	<b>24.39</b>

### TOTAL THC\*: 0.15 %

THC + THC-A\*: % by weight

### TOTAL CBD\*: 2.29 %

CBD + CBD-A\*: % by weight



### ADDITIONAL INFORMATION

\*\*THC Conversion 100.00%

\*\*CBD Conversion 100.00%

\***Total THC** is calculated using the equation  $THC + (THC-A \cdot 0.877)$ . This accounts for the weight lost by THC-A when it is decarboxylated to become active THC. An equivalent formula is used to determine Total CBD.

\*\***THC/CBD Conversion** indicates the percentage of total cannabinoid that was already converted to active cannabinoid at the time of testing. 100% indicates that all cannabinoid present was in the active, decarboxylated form at the time of testing.

**N/D** = Not Detected. The level of analyte was below the detection threshold for this test.

**LLOQ** = Lower Limit of Quantitation. <LLOQ signifies that the analyte was detected at a concentration below the calibrated range of the method and could not be accurately measured.

Authorized by: Roy Turton, Lab Director

Page 2 of 5

ISO/IEC 17025:2017

