

Sample Received: 9/4/2020 Report Date: 9/8/2020 Report: 10734

WARFIGHTER HEMP-6000MG FS PEPPERMINT LOT-20826-2

Potency Analysis Report

METRC No. 1A400071267FAAC000002335

Sample: **69165H-C** CONCENTRATES

Batch:

Item Notes:

CANNABINOID LEVELS

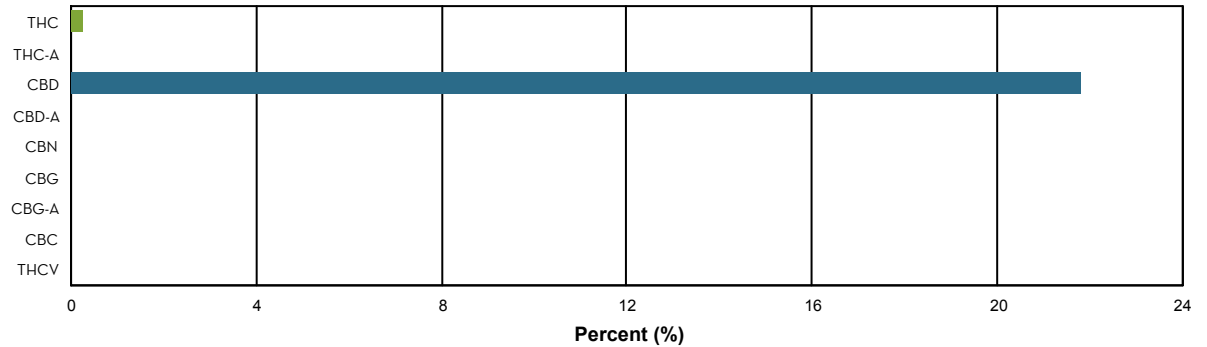
	%	mg/gram
THC	0.25	2.48
THC-A	N/D	N/D
CBD	21.83	218.32
CBD-A	N/D	N/D
CBN	N/D	N/D
CBG	N/D	N/D
CBG-A	N/D	N/D
CBC	N/D	N/D
THCV	N/D	N/D
Total	22.08	220.80

TOTAL THC*: 0.25 %

THC + THC-A*: % by weight

TOTAL CBD*: 21.83 %

CBD + CBD-A*: % by weight



ADDITIONAL INFORMATION

**THC Conversion 100.00%

**CBD Conversion 100.00%

***Total THC** is calculated using the equation $THC + (THC-A \cdot 0.877)$. This accounts for the weight lost by THC-A when it is decarboxylated to become active THC. An equivalent formula is used to determine Total CBD.

****THC/CBD Conversion** indicates the percentage of total cannabinoid that was already converted to active cannabinoid at the time of testing. 100% indicates that all cannabinoid present was in the active, decarboxylated form at the time of testing.

N/D = Not Detected. The level of analyte was below the detection threshold for this test.

LLOQ = Lower Limit of Quantitation. <LLOQ signifies that the analyte was detected at a concentration below the calibrated range of the method and could not be accurately measured.

Authorized by: Roy Turton, Lab Director

Page 2 of 9

ISO/IEC 17025:2017

